

# Spam Is Bad

---

John R. Levine  
Chair, IRTF ASRG  
Chair@asrg.sp.am  
<http://asrg.sp.am>

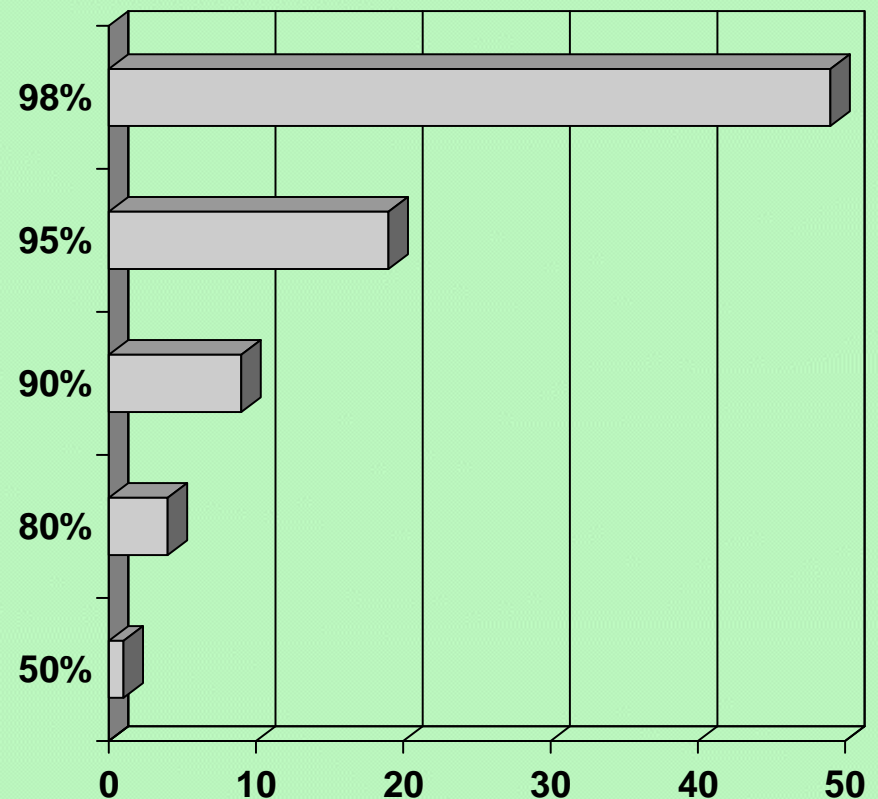
# Why is spam bad?

---

- There's too much of it
- It's offensive
- It's fraudulent

# Why is spam bad?

- *There's too much of it*
  - More spam than real mail everywhere
  - Large ISPs see > 80% spam
  - Even with filters, real mail is lost in the noise



# Why is spam bad?

---

- *It's offensive*
  - Large amounts of porn
  - Porn in the spam itself
  - Who'd give their kid an e-mail account?

# Why is spam bad?

---

- *It's fraudulent*
  - All those fake addresses
  - Forgeries of familiar addresses
  - Selling fraudulent stuff
  - Who'll read real mail from the bank after getting 1000 fake mails from the bank?

# What Isn't the Spam Problem?

---

- The Authentication Problem
- The Introduction Problem
- The Filtering Problem
- The Accreditation Problem
- The Reputation Problem

# The Authentication Problem

---

- Verify that a message is actually from the sender it purports to be from

# The Authentication Problem

---

- Verify that a message is actually from the **sender** it purports to be from



# The Authentication Problem

---

- Verify that a message is actually from the **sender** it purports to be from
- Same person as last time?

# The Authentication Problem

---

- Verify that a message is actually from the **sender** it purports to be from
- Same person as last time?
- An actual real-life person?

# The Authentication Problem

---

- Verify that a message is actually from the **sender** it purports to be from
- Same person as last time?
- An actual real-life person?
- An entity against which we can retaliate?

# The Introduction Problem

---

- Mail from hitherto unknown senders
- Make it hard enough to deter spammers
- But easy enough to admit real mail

# The Introduction Problem

---

- Mail from hitherto unknown senders
- Make it hard enough to deter spammers
- But easy enough to admit real mail

E-postage    Hashcash

CAPTCHA    Challenge/Response

# The Filtering Problem

---

- Distinguish nice mail from nasty mail
- Try not to lose too much nice mail
- Hope it's not too expensive to do
- Hope my tastes and yours aren't too different

# The Accreditation Problem

---

- Third parties that vouch for potential correspondents
- You can prove you're nice to one place rather than millions?

# The Accreditation Problem

---

- Third parties that vouch for potential correspondents
- You can prove you're nice to one place rather than millions?
  - Bonded Sender
  - Habeas
  - IADB (ISIPP Accreditation Database)



# The Reputation Problem

---

- Who's nasty, who's nice
- State of the art: DNSBLs
- Needs a lot of work
  - What do you ask a reputation system?
  - What kinds of answers can they return

# Are These the Spam Problem?

---

- **NO**
- They're related to it
- But they're not the spam problem
- Or even necessarily parts of it

# What has ASRG done lately?

---

- Reorganized into subgroups
- One finished, a few under way

# Lightweight MTA Authentication Protocol

---

- Threw it over the wall to MARID
- Reborn as SMTP authorization
  - Looking at analysis of effect of whatever MARID does

# Abuse reporting

---

- Simple convention for exchanging spam reports as e-mail
- Large ISPs express interest

# BCP

---

- Drafted a few
  - DNSBLs / DNSWLs
  - Port 25 blocking and SUBMIT

# Filtering

---

- Some work on a header to document what filtering has happened
- Now looking at filtering rule exchange

# Message verification

---

- Domain keys, Authenticated Mail, TEOS, Lumos, S/MIME, ...
- Look for common aspects
  - Probably redundant with MASS



# Identity, Authentication, and Reputation

---

- Lots of interest, no action
- Sender-ID et al need a reputation system
- How do we build them? What are the questions? What are the answers?
- Can we invent common interfaces?

# Things we're not doing

---

- Define spam
- Challenge/response
- E-postage
- Replacements for SMTP

# What's happening elsewhere

---

- Open Group
  - Validation profiles
- MAAWG
  - Implementation advice to members
- ITU-T
  - Technical and administrative coordination
  - Tell governments what to endorse

# The standards process

---

## IETF

- Practical orientation
- Based on working prototypes
- Fast efficient process

## ITU-T

- Driven by politics
- Paper designs
- Slow cumbersome process

# The standards process

---

## ITU-T

- Practical orientation
- Based on working prototypes
- Fast efficient process

## IETF

- Driven by politics
- Paper designs
- Slow cumbersome process

# So where are we?

---

- Spam is still bad
- Solutions are hard
- But we can make incremental progress

# Spam Is Bad

---

John R. Levine  
Chair, IRTF ASRG  
Chair@asrg.sp.am